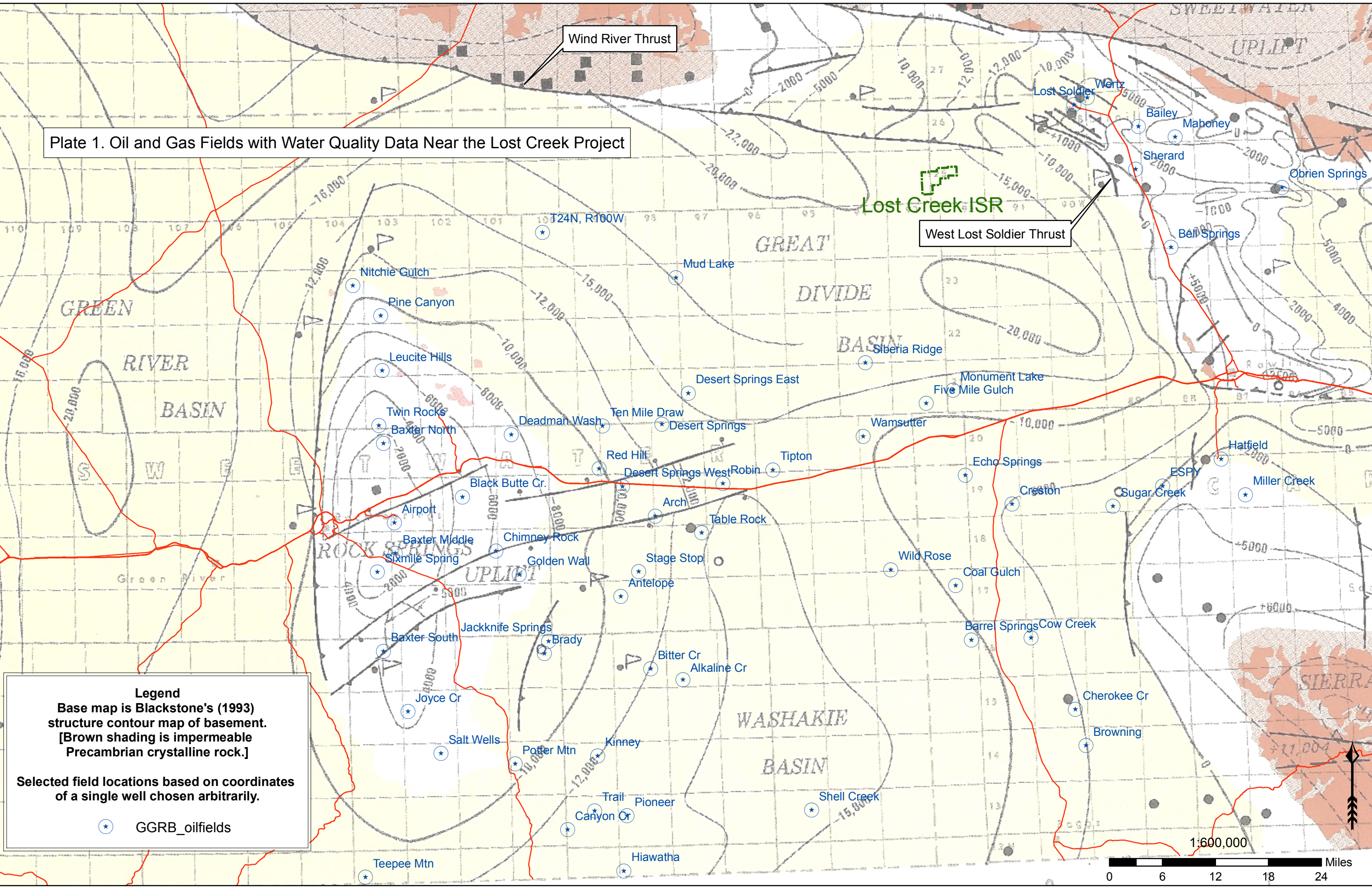


Wind River Thrust

Plate 1. Oil and Gas Fields with Water Quality Data Near the Lost Creek Project

Lost Creek ISR

West Lost Soldier Thrust



Legend

Base map is Blackstone's (1993) structure contour map of basement. [Brown shading is impermeable Precambrian crystalline rock.]

Selected field locations based on coordinates of a single well chosen arbitrarily.

⊛ GGRB_oilfields

